

# Socket plug

## Industrial Ethernet

RJ45K23



### General information

Item number	RJ45K23
Model	Socket plug
Colour	yellow

### Standards/Directives

According to	EN 50173
Standard	Industrial Ethernet

### Operating conditions

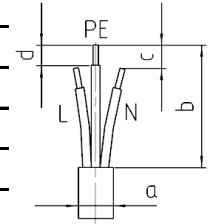
Storage temperature	-25°C to +70°C
Operating temperature	-25°C to +40°C
Relative humidity	5 to 95%, no condensation
Degree of protection	IP 55

### Materials

Housing	PA
---------	----

**Connecting cable**

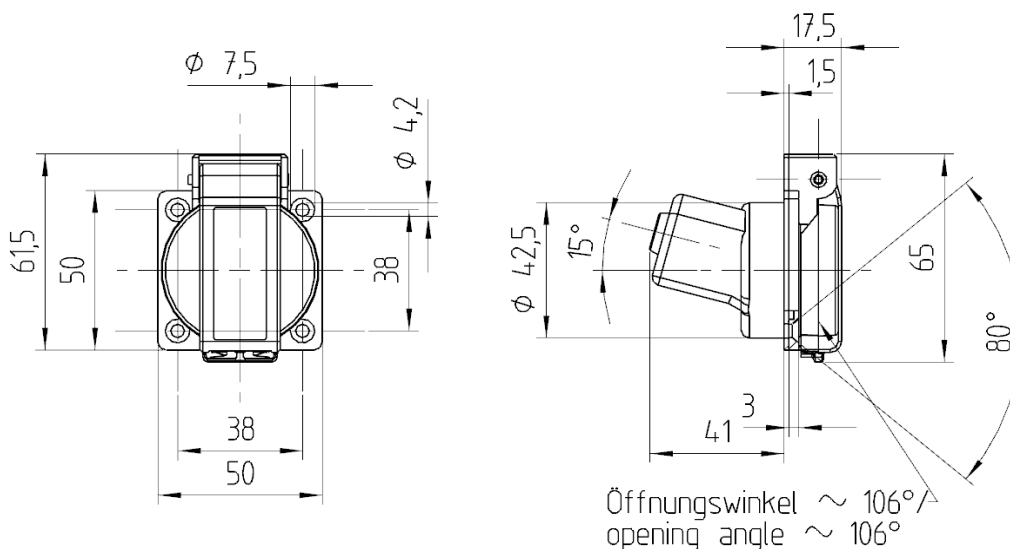
Cross section	AWG2622; AWG26/7
Cable diameter, dimension a	4,5-10mm
Insulation strip length sheath, dimension b	max. 30mm
Trim L/N, dimension c	-
Insulation strip length cores, dimension d	0mm



**Additional technical information**

Note	Access side: IDC insulation-piercing plug technology, outgoing side: 2x RJ45 Cat.6 modules 8(8)
	<ul style="list-style-type: none"> <li>- for 10 GBit Ethernet (IEEE 802.3an)</li> <li>- Class EA up to 500 MHz to ISO/IEC 11801:2008 Ed.2.1</li> <li>- suitable for Power over Ethernet (PoE)</li> <li>- easy to install connection of 2 to 4 pair data lines AWG 24/1 - 22/1 and stranded wires with 7 copper conductors AWG 26/7 to BTR 8-fold insulation displacement connectors (IDC)</li> <li>- marking of conductor assignment to TIA/EIA 568A</li> <li>- easy and fast insertion in E-DAT modul stuffer cap</li> <li>- module housing made of refined zinc die-casting</li> <li>- mounting without special tools</li> <li>- strain relief with cable tie at the module</li> </ul>

Subject to modifications



If the application requires extended specifications, we recommend to test the application under real or simulated conditions. Parameters like duration, quantity and temperature will effect the result significantly